

# TRI STAR FACEMOUNT, 12V

## 316 STAINLESS STEEL HOUSING



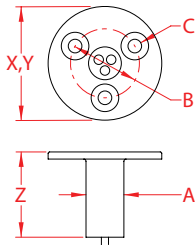
Import



Precision  
Cast



Suncor  
Exclusive



ITEM	A	B	C	COLOR	X (height)	Y (length)	Z (width)	WT (lb)	PACKAGING TYPE	EACH (qty)	INNER (qty)	CARTON (qty)	UPC
S0803-5000	0.50"	0.91"	0.18"	WHITE	1.50"	1.50"	1.13"	0.08	POLYBAG	1	10	400	791506052968
S0803-500R	0.50"	0.91"	0.18"	RED	1.50"	1.50"	1.13"	0.08	POLYBAG	1	10	500	791506052975

**NOTE:**  
**A VERY LOW PROFILE VERSION OF THE TRI STAR WITH ALL ITS FEATURES: WATERPROOF TO 10 FEET; MOST EFFICIENT IN POWER CONSUMPTION 20 MA @13 VDC (TYPICAL). THE SELF-CONTAINED HOUSING PROTRUDES ONLY 1/16" AND CAN BE MOUNTED FROM THE FRONT USING COUNTERSUNK SCREWS FOR EASY REMOVAL OR RIVETS FOR ADDED SECURITY. REFERENCE "FASTENER MATCHING CHART" FOR COMPATIBLE FASTENERS.**  
**ALL DIMENSIONS ARE NOMINAL (+/- 3%) AND ARE SUBJECT TO CHANGE WITHOUT NOTICE.**